

133

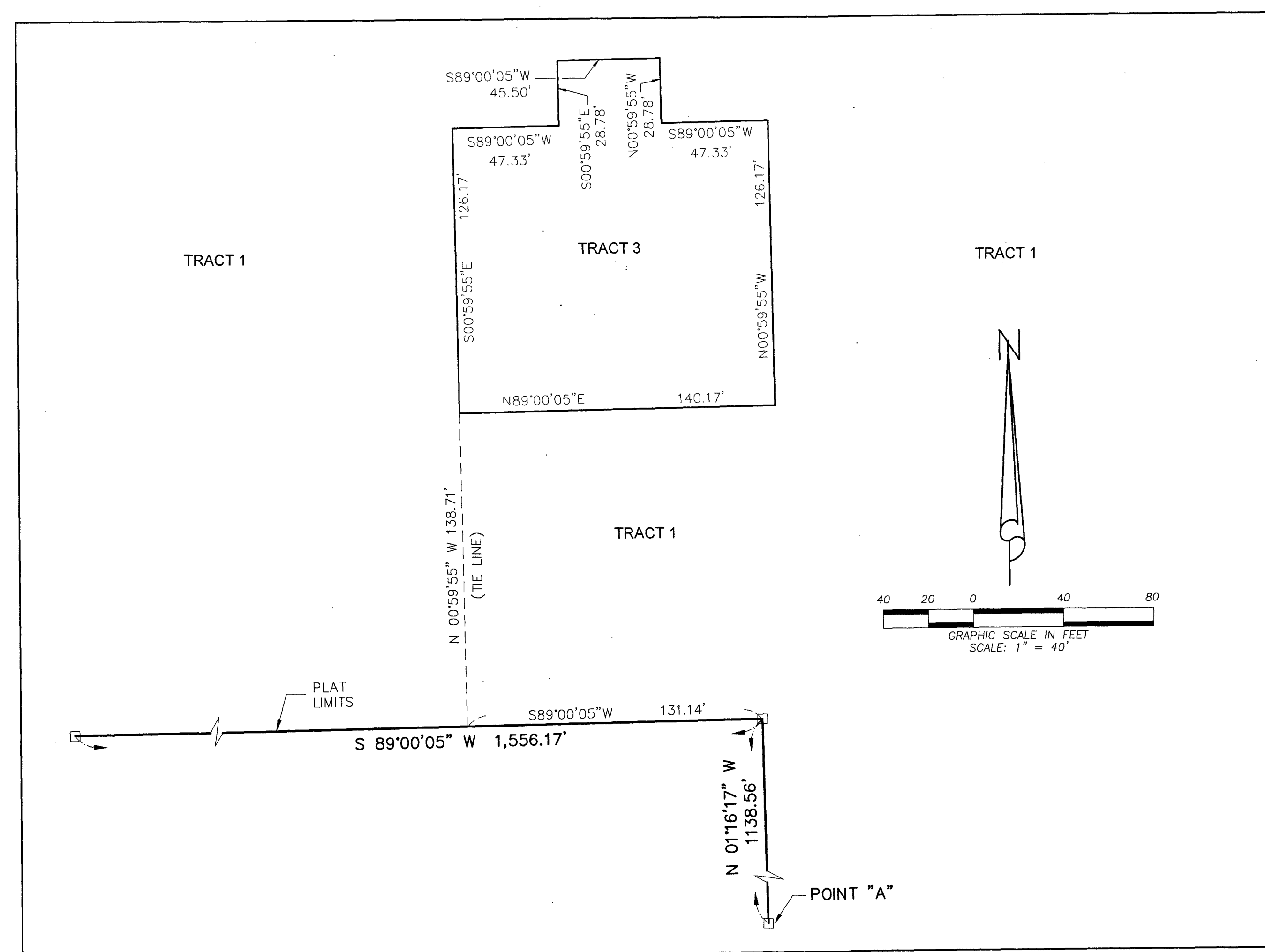
# WELLINGTON REGIONAL MEDICAL CENTER

BEING A REPLAT OF A PORTION OF TRACT 17, ALL OF TRACTS 18 AND 19, AND A PORTION OF TRACTS 20, 21, 22, 27, 28, BLOCK 18, TOGETHER WITH A PORTION OF THE 25' WIDE RESERVATION FOR ROAD, DYKE AND DITCH PURPOSES, PALM BEACH FARMS COMPANY PLAT NO. 3, AS RECORDED IN PLAT BOOK 2, AT PAGES 45 THROUGH 54 INCLUSIVE, OF THE PUBLIC RECORDS OF PALM BEACH COUNTY, FLORIDA.  
SECTION 12, TOWNSHIP 44 SOUTH, RANGE 41 EAST, VILLAGE OF WELLINGTON, PALM BEACH COUNTY, FLORIDA  
NOVEMBER 2024

DETAIL SHEET

DETAIL 19  
(FROM SHEET 7 & 8 OF 20)

SHEET 19 OF 20



## LEGEND

- CL = CENTERLINE
- DE = DRAINAGE EASEMENT
- DB = DEED BOOK
- F.P.L. = FLORIDA POWER & LIGHT
- LAE = LIMITED ACCESS EASEMENT
- LBE = LANDSCAPE BUFFER EASEMENT
- LCAE = LIMITED CROSS ACCESS EASEMENT
- LME = LAKE MAINTENANCE EASEMENT
- LMAE = LAKE MAINTENANCE ACCESS EASEMENT
- LSE = LANDSCAPE EASEMENT
- LB# = LICENSED BUSINESS NUMBER
- O.R.B. = OFFICIAL RECORD BOOK
- P.B.C.R. = PALM BEACH COUNTY RECORDS
- (P) = PER THE PLAT OF PALM BEACH FARMS COMPANY PLAT NO. 3, (PLAT BOOK 2, PAGE 45, P.B.C.R.)
- P.R.M. = PERMANENT REFERENCE MONUMENT
- P.B. = PLAT BOOK
- PG. = PAGE(S)
- P.R.M. = PERMANENT REFERENCE MONUMENT
- R.P.B. = ROAD PLAT BOOK
- R/W = RIGHT OF WAY
- SSDE = SAFE SIGHT DISTANCE EASEMENT
- sq. ft. = SQUARE FEET
- (T.) = TOTAL
- U.E. = UTILITY EASEMENT
- WE = WATER EASEMENT
- WSE = WATER & SEWER EASEMENT
- 4"x4" = 4"x4" PERMANENT REFERENCE MONUMENT
- = SET 5/8" IRON ROD & CAP LB No. [ ]

THIS INSTRUMENT WAS PREPARED BY:  
DAVID A. BOWER, P.S.M. #5888 IN THE OFFICES  
OF DENNIS J. LEAVY AND ASSOCIATES, INC., LB #6599  
460 BUSINESS PARK WAY, SUITE B  
ROYAL PALM BEACH, FLORIDA 33411  
(561) 753 - 0650

DENNIS J. LEAVY & ASSOCIATES, INC.  
LAND SURVEYORS AND MAPPERS

460 BUSINESS PARK WAY \* SUITE B \* ROYAL PALM BEACH, FL \* 33411  
PHONE: (561) 753-0650 FAX: (561) 753-0290

SCALE: 1"=40' CHECKED BY: D.B. DATE: 10/20/2008  
DRAWN BY: E.B. JOB NO.: 04-052-06PLAT